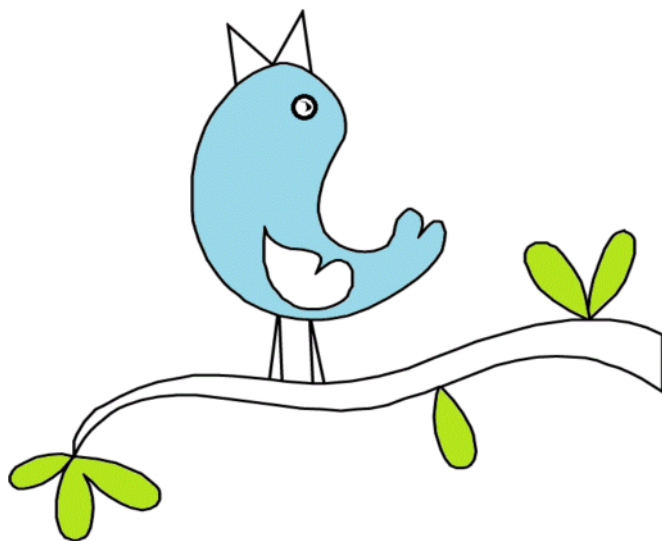


Castle Bromwich Singers
present

Spring into Song

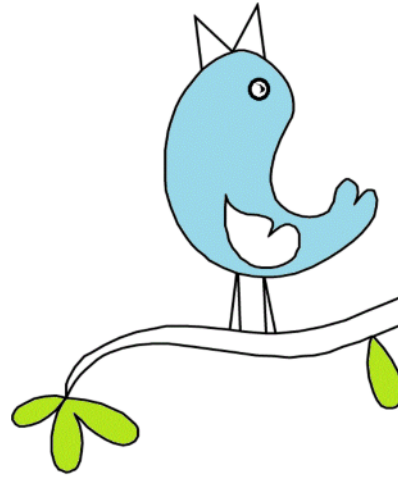


Programme 50p

22nd March 2014

Spring

S



First half

The Muppet Show Theme
Rock around the Clock
Cheek to Cheek
Walk like a Man
December '63
Beneath your Beautiful
Next to Me
Skyfall
I Remember it Well
The Wonder of You
Ben
Troublemaker
Amazing Grace
The Lion Sleeps Tonight
Moondance

Refreshments will be available in the interval. Donations to CLAPA are welcome.

The net profit from tonight's show will be split between this year's charity CLAPA and our own equipment fund.

CLAPA, the Cleft Lip and Palate Association, is the only UK-wide voluntary organisation specifically helping those with, and affected by, cleft lip and palate and we are supporting the local West Midlands branch.

Since the removal of both sound and most lighting equipment at Arden Hall Castle Bromwich Singers have had to fund their own equipment to enable us to continue to produce quality shows. This equipment has mostly been funded via community grants, such as the one received from Birmingham Airport Community Trust Fund last year of £2000.00. Further items are needed and this show will help fund those purchases.

ng into ong



Second Half

At the Hop
Let's Twist Again
Rock a Hula Baby
The Loco-motion
Higher Than A Hawk
Panis Angelicus
Man, I feel like a Woman
That Don't Impress Me Much
Crying in the Rain
Bye Bye, Love
There is Nothing Like A Dame
Don't Stop Me Now
The Party's Over
Time to Say Goodbye
So Long Farewell

Castle Bromwich Singers practice every Tuesday at Castle Bromwich Baptist Church.


So why do we sing ?

To spread the joy of music... For the thrill of show night and the smiles on the audience's faces... To make friends and keep active... To develop our talents as singers and entertainers... AND to raise money for charity. If you would like to join us in any capacity please contact:

- Singing & musicians
 - Stella Aston
 - 0121 748 7635
- Front of House & backstage
 - Greg Thomas
 - 01675 592059

Email: castlebromwichsingers@gmail.com
Please visit our website for further details.
www.castlebromwichsingers.org.uk



We're also on  at www.facebook.com/CBSingers



Singers

Maureen Askill
Pauline Bodfish
Trevor Brindley
Julie Corcoran
Clare Corcoran
Carol Cox
Barbara Cross
Pat Gupwell
Frank Harding
Les Holgate
Rita Hughes
Jackie Kelly
David Kemp
Joyce Mitchell
Barbara Oliver
Marian Pollock
Allan Thomas
Jordan Thomas
Lisa Thomas
Jenny Tubbs
Jack Woodward

Kitchen

Betty Georgeson
Molly Holmes
Rodger Todd

Singers Committee

John Goldingay	Chairman
David Kemp	Vice Chairman
Stella Aston	Musical Director
Pauline Bodfish	Secretary / Publicity
Lisa Thomas	Treasurer
Greg Thomas	Front of House Manager

Membership

Alan Thomas

Production Team

David Kemp	Producer
Stella Aston	Musical Director
Helen Kemp	

Musicians

Stella Aston	Musical Director & Piano
Malcolm Bell	Bass Guitar
Helen Kemp	Keyboard & Accordion
Adam Thomas	Drums

Wardrobe

Mildred Goldingay	Margaret Grady
Molly Holmes	

Front of House

Greg Thomas	Manager
Sue Bell	
Ryan Charlton	
Betty Georgeson	
Molly Holmes	
Luke Mills	

Castle Bromwich Singers would like to thank The Baptist Church, Timberley Lane for the use of their church for tonight's show and for the continued use during the year, for practises each Tuesday evening.

Many thanks to everyone else who has helped in any way, whose names were not known at the time the programmes were printed.